



What is inside?

These parts are inside you.

fallopian tubes

The egg goes from your ovary along the fallopian tube and into your womb.

ovaries

These are where your eggs grow. One egg is released each month. Hormones are made in the ovaries.

egg

womb

This is about as big as a pear. The lining of your womb is where the egg grows into a baby if you are pregnant.

womb lining

If you are not pregnant the lining of your womb comes away. It looks like blood. This is your period.

cervix

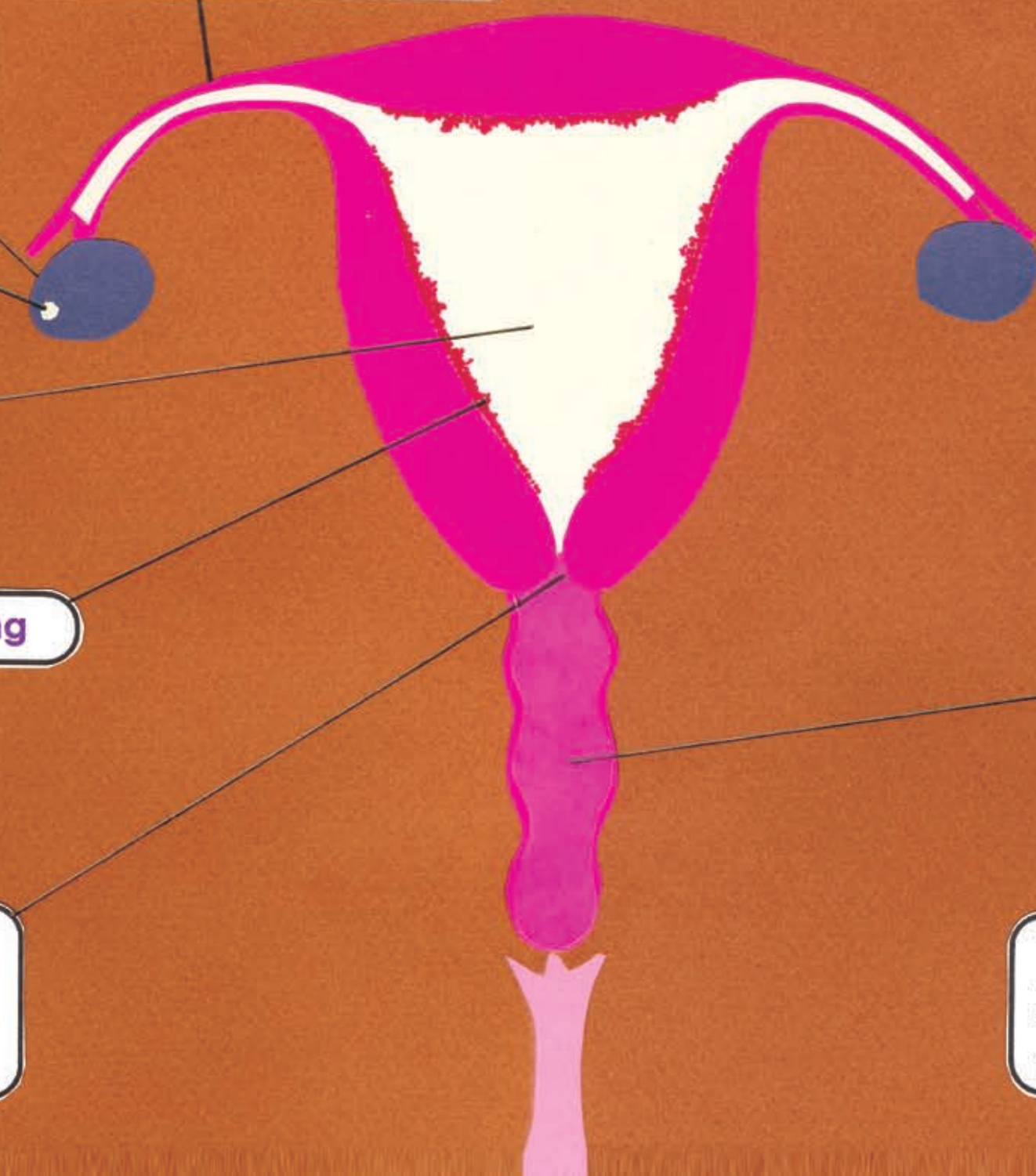
This is the end of your womb. Your doctor or nurse will look at this part if you have a smear test.

vagina

Your vagina goes from the outside of your body to your womb. It is about as long as your finger.

Your vagina is very stretchy. The skin inside feels bumpy and soft.

Your vagina is where the blood comes out when you have your period. This is where you put a tampon if you want to use them.



Your vagina will always feel a bit wet.
It makes a sticky fluid.
This keeps your vagina clean and healthy.
Your doctor or nurse might call this mucus or discharge.

If you feel excited in a sexy way your vagina will feel more wet.



The end of your vagina, near the opening
is very sensitive. It may feel good to touch.

You can talk to your doctor
if you have any worries about your health.
You can ask to see a woman doctor or the practice nurse.

If you have questions about your body or periods
you can telephone Women's Health and talk to a woman in private.

Helpline: 0845 125 5254

Monday-Friday 9.30am-1.30pm

Minicom 020 7490 5489